

INDIAN NOTICES TO MARINERS

EDITION NO. 19 DATED 01 OCT 2016

(CONTAINS NOTICES 174 TO 180)



REACH US 24 x 7



incho@navy.gov.in
msis-incho@navy.gov.in



+91-135-2748373



National Hydrographic Office
107-A, Rajpur Road
Dehradun – 248001
INDIA



Joint Director of Hydrography
Maritime Safety Information Services
+91- 135 - 2746290-117

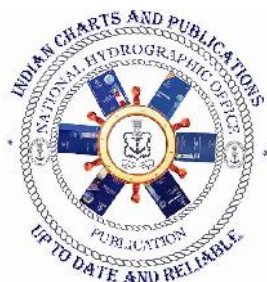
WWW
www.hydrobharat.gov.in

CONTENTS

Section No.	Title
I	List of Charts Affected
II	Permanent Notices
III	Temporary and Preliminary Notices
IV	Marine Information
V	NAVAREA VIII Warnings in force
VI	Corrections to Sailing Directions
VII	Corrections to List of Lights
VIII	Corrections to List of Radio Signals
IX	Reporting of Navigational Dangers

(PUBLISHED ON NHO WEBSITE ON 1ST & 16TH OF EVERY MONTH)

FEEDBACK: msis-incho@navy.gov.in



INSIST ON INDIAN CHARTS AND
PUBLICATIONS
Original, Authentic and Up-to-Date



© Govt. of India Copyright

No permission is required to make copies of these Notices. However, such copies are not to be commercially sold.

II

MARINER'S OBLIGATION AND A CHART MAKER'S PLEA

Observing changes at sea proactively and reporting them promptly to the concerned charting agency, is an obligation that all mariners owe to the entire maritime community towards SOLAS. Mariners are requested to notify the Chief Hydrographer to the Government of India at the above mentioned address/fax number/ E mail address immediately on discovering new or suspected dangers to navigation, changes/defects pertaining to navigational aids, and shortcomings in Indian charts/publications. The Hydrographic Note [Form IH – 102] is a convenient form to notify such changes. Specimen form is attached at Section IX with this notice. Also visit our website for downloading and filling up instructions for Hydrographic Note.

**Chief Hydrographer
to the Government of India**

WARNING AGAINST USE OF COUNTERFEIT PRODUCTS

All mariners are cautioned against the use of counterfeit copies of IN Charts and publications. Navigational Charts produced after 31 Oct 14 carry NHO crest as watermark on the reverse with backslip. Chart Agent's stamp is mandatory on all Charts.

Counterfeit products may have errors resulting in potential risks. The same are not approved by inspecting agencies and do not satisfy the carriage requirements of SOLAS chapter V.

Mariners are strongly advised not to use or encourage the use of counterfeit charts and publications. Failure to comply with the warning may invite legal action.

III

EXPLANATORY NOTES

Corrections to Charts and Publications. Section I comprises List of Charts affected by the notices contained in this edition. Whereas sections II and III contain information for correcting the charts and publications. Mariners should insist on corrected charts from their chart distributors/agents.

- (a) Geographical positions given are in the horizontal datum of the current edition of the chart, unless otherwise stated.
- (b) Bearings are true, reckoned clockwise from 000° to 359°. Bearings to lights are from seaward.
- (c) Symbols referred to, are those shown on the chart 5020 (INT 1).
- (d) Alterations to depth contours, deletion of depths to make way for new detail, etc; are not normally mentioned, unless they have some navigational significance.
- (e) Blocks and notes, if any, accompanying the Notices in Sections II and III are placed after Section IX.

Temporary and Preliminary Notices. These are indicated by (T) and (P) respectively after the Notice number and are placed in Section III. SI Nos. of those in force are published quarterly on 01 Jan, 01 Apr, 01 Jul and 01 Oct, and their text is published in Annual Edition of Indian Notices to Mariners. They should be inserted in pencil, by the user, on receipt.

Source of Information. A star preceding the number of a Notice indicates that the notice is promulgated by INHO based on original information received.

Sailing Directions. Corrections for the Sailing Directions (Pilots) are given in Section VI.

Lights. Corrections to Indian List of Lights are given in Section VII, where affected Light List number is quoted.

- (a) These corrections should be incorporated as per instructions given on page XI of the List of Lights.
- (b) Such correction notices to list of lights may be published in either an earlier or a later Edition of N to M than the Edition containing the Notice to the chart correction.
- (c) The range of a light given is its nominal range. Its geographical range is given in parenthesis only if it is less than the nominal range.
- (d) A star indicates that the corresponding field is to be amended and all stars indicate that new light is to be inserted.

Radio Signals. The corrections in Section VIII should be cut and pasted in the appropriate volume of the List of Radio Signals.

Radio Navigational Warnings.

- (a) These are broadcast as serially numbered NAVAREA warnings by the concerned NAVAREA coordinator through GMDSS and Area Radio Broadcasts.
- (b) They contain important information affecting navigational safety, which cannot await the publication of the next edition of N to M.
- (c) It should be borne in mind that they may be based on reports which cannot always be verified before promulgation.
- (d) It is therefore necessary to be selective, and promulgate only the more important warnings to avoid overloading users; the less important information is included in the forthcoming edition of N to M or the Chart/publication concerned.

IV

Laws and Regulations. While in the interest of the safety of shipping, the Hydrographic Office makes every endeavor to include in its publications details of the laws and regulations of all countries pertaining to navigation, it must be clearly understood: -

- (a) That no liability whatsoever can be accepted for failure to publish details of any particular law or regulation and
- (b) That publication of details of a law or regulation is solely for the safety and convenience of shipping and implies no recognition of the International validity of the law or regulation.

Correction of Charts and Publications by the Users. Notices to Mariners contain important information concerning safety of navigation at sea, hence, they should be used to keep the specified charts and publications up-to-date.

Reliance on Charts and Associated Publications. While every effort is made by the Hydrographic Office to ensure the accuracy of the information on Charts and Publications before they are published, it should be appreciated that it may not always be complete and up-to-date. The mariner must be the final judge for the reliance he can place on the information available, bearing in mind his particular circumstances, local pilotage guidance and judicious use of available navigational aids.

Use of Global Positioning System (WGS 84) positions.

- (a) The positions of hydrographic objects shown on some of the Indian charts and publications are in Everest datum. However, the positions of vessels obtained from Global Positioning System (GPS) are on World Geodetic System 1984 datum. There will always exist a difference in the position values obtained by visual fixing (Everest Datum) and GPS position (WGS 84 datum).
- (b) Wherever these differences have been ascertained, their average values are published as a Cautionary Note on the chart concerned, as shifts in Latitude and Longitude. Whilst plotting GPS positions on charts, the shift values as given on the chart must be applied, before making any assessment of the navigational situation vis-à-vis the other charted information.
- (c) These datum shift values are not uniform, particularly in areas off Andaman and Nicobar and Lakshadweep Islands, as these places are not linked to mainland network (Everest datum). Mariners are advised to use alternate source of position information such as Visual or Radar, particularly when closing the shore or navigating in the vicinity of dangers.

Source Data on Charts. All Indian charts contain specific information on their source of hydrographic data. In areas where the source data is very old, incomplete and less reliable, the mariner must use such charts with prudence. Mariner should always use the largest scale charts available for the area. Apart from being the most detailed, the larger scale charts are usually corrected first. Hydrographic information may be sparse on small scale charts. On such charts, a charted shoal may be in error as regards position, least depth and extent. Uncharted dangers may also exist, particularly in areas away from well-established routes. Mariners must exercise due caution.

Further Guidance. The Mariner's Hand Book (NP 100) gives full explanation on the use of charts and the type of information contained on charts. In their own interest, all users of charts should refer to it.

NEWLY PUBLISHED INDIAN CHARTS, ENC_s AND PUBLICATION

1. The new Indian Charts that are available for mariners in the market is as follows:-

<i>Chart No.</i>	<i>Date of Publication</i>	<i>Title, Limits & Description</i>	<i>Scale</i>	<i>Folio</i>	<i>Price</i>
2075 (INT 7366)	15-08-2016	APPROACHES TO TUTICORIN LIMITS 08° 39'.80N; 78° 07'.24E. 08° 52'.30N; 78° 28'.00E.	60,000	4	Rs. 1870.00
		TUTICORIN HARBOUR LIMITS 08° 42'.10N; 78° 08'.60E. 08° 50'.00N; 78° 17'.30E.	25,000		
2123	31-08-2016	ULWA CHANNEL LIMITS 18° 57'.50N; 72° 57'.10E. 19° 01'.00N; 73° 02'.70E.	10,000	3	Rs. 1870.00
2125	31-08-2016	BHOGAT ANCHORAGE LIMITS 21° 51'.30N; 69° 01'.00E. 21° 59'.80N; 69° 15'.00E.	25,000	2	Rs. 1870.00
4001	31-08-2016	ELPHINSTONE HARBOUR & RANGAT BAY LIMITS 12° 15'.00N; 92° 52'.00E. 12° 30'.00N; 93° 02'.00E.	27,500	6	Rs. 1870.00

2. The Indian Charts permanently withdrawn are as follows:-

<i>Chart No.</i>	<i>Date of Publication</i>	<i>Title</i>	<i>On Publication of New Chart/ Edition</i>	<i>Date of Publication</i>
2075 (INT 7366)	31-05-2008	APPROACHES TO TUTICORIN	2075 (INT 7366)	15-08-2016
		TUTICORIN HARBOUR		
4001	31-07-2007	ELPHINSTONE HARBOUR & RANGAT BAY	4001	31-08-2016

3. The new edition Indian Electronic Navigational Charts that are available for mariners in the market is as follows:-

<i>ENC Cell Name</i>	<i>Chart No.</i>	<i>Title</i>	<i>Issue Date</i>
IN63010R	3010	PARADIP PORT	29-09-2016
IN53010A	3010	PARADIP ANCHORAGE	29-09-2016
IN43041P	3041	APPROACHES TO PARADIP	29-09-2016

4. The Indian Electronic Navigational Charts that are permanently withdrawn are as follows:-

<i>ENC Cell Name</i>	<i>Chart No.</i>	<i>Title</i>	<i>Issue Date</i>
IN63010R	3010	PARADIP PORT	09-08-2016
IN53010A	3010	PARADIP ANCHORAGE	09-08-2016
IN43041P	3041	APPROACHES TO PARADIP	17-04-2015

VI

5. The forthcoming Indian Charts are as follows:-

<i>Chart No</i>	<i>Title</i>	<i>Scale</i>	<i>Remarks</i>
2074	PAWAS BAY – RANPAR PORT	10,000	New Chart
	APPROACHES TO PAWAS BAY	25,000	
2110	DAHEJ HARBOUR	12,500	New Edition
2124	SALAYA CHANNEL	15,000	New Chart
4005	NANCOWRY HARBOUR AND APPROACHES	12,500	New Edition
4017	EXPEDITION AND GRAND HARBOURS	12,500	New Edition

Availability of ENC's

The complete folios of Official Indian ENC's are distributed worldwide through JEPPESEN MARINE (formerly C-MAP), UKHO and Norwegian Hydrographic Service. UKHO distributes Indian ENC's through the world wide network of their agents and distributors. Updates are also made available as per the existing policy of the distributor. Mariners and other ENC users may contact the under mentioned for further details:

United Kingdom Hydrographic Office Admiralty Way, Taunton, Somerset TA1 2DN, UK Tel: +44 (0) 1823 337900 Fax: +44 (0) 1823 330561, 1823 284077 Telex: 46274 Web site: www.hydro.gov.uk	M/s Jeppesen Norway AS Hovalandsveien 52 PO Box 212, N-4379, Egersund, Norway Ph: +47 51 464700 Mob: +91 93222 38542 Fax: +47 51 464701 Email: enc@jeppesen.com, info@c-map.co.no Website: www.jeppesen.com
M/s Primar Norwegian Hydrographic Service, Postbox 60, 4001 Stavanger Norway Telephone - +47 - 51 85 87 00 Fax - + 47 - 51 85 87 08 E-mail: data@ecc.no Website: - www.primar.org	M/s IIC Technologies Limited B-2-350/5/B-22, Road No. 3 Banjara Hills Hyderabad - 500 034 Telangana Tel: +91 4039144444 Fax: +91 4039144455 Email: somnath.marthi@iictechnologies.com Web: www.iictechnologies.com

VII TEMPORARY AND PRELIMINARY NOTICES

In Force 01 Oct 2016

(Former In Force List dated 01 Jul 2016 is cancelled)

Cancelled Notices	
Area	Notice No.
1	Nil.
2	077/16, 127/16, 134/16, 141/16, 142/16, 143/16.
3	184/15, 192/15, 193/15, 194/15, 195/15, 058/16, 059/16, 128/16, 144/16.
4	Nil.

1. AFRICA EAST COAST, MADAGASCAR, RED SEA, ARABIA, PERSIAN GULF, PAKISTAN.

<u>Notice</u>	<u>Charts Affected</u>	<u>Description</u>
445/06	20 – 21 – 286 – 291 – 2088 – 2094 – 2095 – 2096 – 7703 (INT 703) – 7705 (INT 705) – 8009 – 8010	ARABIAN SEA – RED SEA – Submarine cables.
152/15	2514	INDIAN OCEAN – MAURITIUS – Port Louis – Buoy.

2. INDIA WEST COAST – INDIAN OCEAN.

<u>Notice</u>	<u>Charts Affected</u>	<u>Description</u>
152/11	2081 – 2100	INDIA – WEST COAST – Pipavav Port – Dredging.
182/12	21 – 22 (INT 752) – 292 (INT 7021) – 2093	INDIA – ARABIAN SEA – Argo Floats.
038/13	2065	INDIA – WEST COAST – Port Dabhol – Buoy.
065/14	23– 31– 33 – 7070(INT 70) – 7071 (INT 71) –7072 (INT 72) –7073(INT 73) – 7702 (INT 702) –7703(INT 703) –7706(INT 706) – 7707(INT 707) –7708(INT 708)	INDIA OCEAN – Data Buoys.
099/14	21– 203 (INT 7319) – 2017	INDIA – WEST COAST – Gulf of Kachchh – Eastern Portion – Buoys.
042/15	22 (INT 752) – 214– 293 (INT 7022) – 2022 (INT 7345)	INDIA – WEST COAST – Approaches to Mormugao – Unlit Vessel.
066/15	271 – 251 (INT 7318) – 203 (INT 7319) – 2031 (INT 7326) – 2068 – 2013 (INT 7324)	INDIA – WEST COAST – Gulf of Kachchh – Port of Okha – Buoys.
087/15	273	INDIAN OCEAN – Kadmat Island to Ihavandiffulu Atoll –Buoy.
098/15	21– 208 – 209 – 254 (INT 7331) – 292 (INT 7021) – 2039– 2102	INDIA – WEST COAST– Bhavnagar Port – Anchorage.
109/15	2043 – 2042 – 2046	INDIA – WEST COAST – Vengurla Anchorage – Buoy.
120/15	21 – 291 – 292 – 253 – 254 – 203 – 207 – 2081 – 2068 – 2079 – 2100 – 2106	INDIA – WEST COAST – Gulf of Kachchh – Racon.
121/15	21 – 22 – 292 – 293 – 255 – 211 – 2016	INDIA – WEST COAST – Inner Approaches to Mumbai – Foul.
127/15	2040	INDIA – WEST COAST – Porbandar Port – Jetty.

VIII

2. INDIA WEST COAST – INDIAN OCEAN. (Continued).

128/15	21 – 22 – 292 (INT 7021) – 293 (INT 7022) – 255 (INT 7334) – 211 – 2016 (INT 7336) – 2015 (INT 7337)	INDIA – WEST COAST – Port of Mumbai – Racon.
157/15	259 (INT 7356) – 260 (INT 7362) – 220 – 2029 (INT 7358) – 2004 (INT 7359).	INDIA – WEST COAST – Kochi Harbour – Buoy.
158/15	260 (INT 7362) – 261 – 222 – 223 – 2012	INDIA – WEST COAST – Vizhinjam Anchorage – Sea Cage Farm.
163/15	21 – 22 (INT 752) – 211 – 255 (INT 7334) – 292 (INT 7021) – 293 (INT 7022) – 2015 (INT 7337) – 2016 (INT 7336) – 2076 (INT 7338)	INDIA – WEST COAST – Mumbai Port – Buoys. Wreck.
183/15	262 (INT 7365) – 224 – 2075 (INT 7366)	INDIA – WEST COAST – Tuticorin Harbour – Breakwater.
186/15	268 (INT 7353) – 273	INDIA – Central Lakshadweep – Light.
035/16	22 – 272 – 258 (INT 7348) – 218 – 2025	INDIA – WEST COAST – Azhikkal Anchorage – Racon.
046/16	202 – 203 (INT 7319) – 2031 (INT 7326) – 2068	INDIA – WEST COAST – Gulf of Kachchh Deep Water Route – Buoy.
047/16	214 – 2022 (INT 7345) – 2078 (INT 7346)	INDIA – WEST COAST – Port of Mormugao – Dredging.
074/16	2079 (INT 7329) – 2106	INDIA – WEST COAST – Mundra Port – Construction Work.
075/16	2016 (INT 7336) – 2015 (INT 7337)	INDIA – WEST COAST – Port of Mumbai – Buoys.
076/16	22 (INT 752) – 32 (INT 754) – 259 (INT 7356) – 260 (INT 7362) – 221	INDIA – WEST COAST – Alleppey to Quilon – Light.
097/16	22 (INT 752) – 293 (INT 7022) – 272 – 258 (INT 7348) – 217 – 2052 (INT 7350)	INDIA – WEST COAST – Approaches to Port of New Mangalore – Buoy.
098/16	21 – 22 (INT 752) – 292 (INT 7021) – 293 (INT 7022) – 272 – 257 (INT 7343) – 259 (INT 7356) – 214 – 221	INDIA – WEST COAST – Arabian Sea – ADCP Moorings.
099/16	21 – 22 – 292 (INT 7021) – 293 (INT 7022) – 254 (INT 7331) – 257 (INT) – 210 – 209 7343) – 214 – 2022 (INT 7345) – 2020.	INDIA – WEST COAST – RACON.
109/16	7070 (INT 70) – 7071 (INT 71) – 7072 (INT 72) – 7701 (INT 701) – 8008.	INDIAN OCEAN – Maputo to Muqdisho – Oceanographic Moorings.
152/16	2008 (INT 7369) – 2010	INDIA – WEST COAST – Karwar Naval Harbour – Buoy.
153/16	2061 – 2099	INDIAN OCEAN – MALDIVES – Male' Atoll – Sea Bridge.
166/16	21 – 22 (INT 752) – 23 – 292 (INT 7021) – 293 (INT 7022) – 273 – 268 (INT 7353) – 257 (INT 7343) – 214 – 2047 – 2022 (INT 7345) – 2020 – 7703 (INT 703) – 7705 (INT 705)	INDIA – WEST COAST – Arabian Sea – Data Buoys. Tsunami Buoy.
178/16	292 (INT 7021) – 254 (INT 7331) – 208 – 2082 – 2110	INDIA – WEST COAST – Gulf of Khambhat – Dahej Harbour – Light.

IX

3. INDIA EAST COAST – ANDAMAN NICOBAR, SRI LANKA, MYANMAR.

<u>Notice</u>	<u>Charts Affected</u>	<u>Description</u>
237/10	406 – 4010	INDIA – ANDAMAN SEA – Little Andaman Islands – Hut Bay – Light.
094/12	33 – 41 (INT 757) – 402 – 403 – 404 (INT 7439) – 405 – 406 – 407 – 408 – 409 – 471 – 472 (INT 7032) – 473 (INT 7031) – 4016 – 4035	INDIA – ANDAMAN SEA – Fish Aggregating Devices.
183/12	31 – 32 (INT 754) – 33 – 354 (INT 7408)	INDIA – BAY OF BENGAL – Argo Floats.
212/12	3034	INDIA – EAST COAST – Krishnapatnam Port – Port Development. Dredging.
225/12	31 – 321 – 322 – 371 – 3020	BAY OF BENGAL – MYANMAR COAST – Combermere Bay to Cheduba Strait – Platform.
159/13	31 – 41 (INT 757) – 409 – 471 – 472 – 4035 – 4039	INDIA – ANDAMAN SEA – Nicobar Island – Campbell Bay – Jetty.
195/13	352 (INT 7416) – 3005	INDIA – EAST COAST – Gopalpur Port – Breakwater. Wrecks. Onshore Installation.
208/14	41 (INT 757) – 410 – 411 – 451 – 452 – 4019	Myanmar – Yangon River – Buoys.
068/15	31 – 32 (INT 754) – 391 – 354 (INT 7408) – 308 – 3002 (INT 7410) – 3012 (INT 7411)	INDIA – EAST COAST – Visakhapatnam Harbour – Buoy.
185/15	408 – 409 – 472 – 4039 – 4182 – 4205	INDIA – Andaman Sea – Lights.
036/16	308 – 3002 (INT 7410) – 3012 (INT 7411)	INDIA – EAST COAST – Visakhapatnam Harbour – Buoy.
038/16	31 – 7071 (INT 71) – 7073 (INT 73) – 7706 (INT 706)	INDIA – BAY OF BENGAL – Survey Operation.
078/16	31 – 32 (INT 754) – 33 – 391 – 356 (INT 7400) – 3034	INDIA – EAST COAST – Krishnapatnam Port – RACON.
079/16	391 – 356 (INT 7400).	INDIA – EAST COAST – Chennai (Madras) to Ramayapatnam – Light.
100/16	31 – 391 – 354 (INT 7408) – 308	INDIA – EAST COAST – Outer Approaches to Vishakhapatnam – Light.
101/16	31 – 352 (INT 7416) – 3041 – 3010 (INT 7418)	INDIA – EAST COAST – Paradip Port – RACON.
108/16	41 (INT 757) – 472 (INT 7032) – 409 – 4036.	ANDAMAN SEA – Approaches to Pulo Millow – Light.
112//16	31 – 32 (INT 754) – 33 – 308 – 352 (INT 7416) – 354 (INT 7408) – 355 (INT 7405) – 357 (INT 7397) – 391	INDIA – EAST COAST – Bay of Bengal – ADCP Moorings.
113/16	31 – 32 (INT 754) – 354 (INT 7408) – 391 – 3009 (INT 7407)	INDIA – EAST COAST – Bay of Bengal – Kakinada – Deep Water Port.
121/16	31 – 32 (INT 754) – 391 – 356 (INT 7400)	INDIA – EAST COAST – Chennai (Madras) to Ramayapatnam – Open Sea Cage.
167/16	32 (INT 754) – 355 (INT 7405) – 391 – 7706 (INT 706)	INDIA – EAST COAST – Ramayapatnam to Sacramento Shoal – Survey Operation.

X

3. INDIA EAST COAST – ANDAMAN NICOBAR, SRI LANKA, MYANMAR. (Continued).

168/16	31 – 32 (INT 754) – 33 – 356 (INT 7400) – 391 – 41 (INT 757) – 404 (INT 7439) – 405 – 472 (INT 7032) – 7706 (INT 706).	INDIA – EAST COAST – Bay of Bengal – Andaman Sea – Data Buoys. Tsunami Buoys.
179/16	32 (INT 754) – 357 (INT 7397) – 3003	INDIA – EAST COAST – Pudduherry Harbour – Data Buoy.
180/16	404 (INT 7439) – 409 – 4014 – 4015 – 4039	INDIA – ANDAMAN SEA – Lights.

4. MALACCA STRAIT, SINGAPORE STRAIT AND SUMATERA

383/03	33 – 41 (INT 757)	INDONESIA – Sumatera – North and Northwest Coasts – Restricted area.
377/07	7508 (INT 508)	INDONESIA – Sumatera – Pulau Belitung West Coast – Tanjungpandan to Jawa North Coast – Pakis – Submarine cable.
238/10	41 (INT 757) – 471	INDONESIA – Sumatera – North West Coast – Pulau Bunta – Lights.

SECTION – I

The list of charts affected by the Notices 174 to 180 contained in this edition is as follows:

CHART NUMBER	FOLIO NO.	NOTICE NO.
32 (INT 754)	5	179 (T)
204	2	177
208	2	178 (T)
211	3	177
212	3	175
254 (INT 7331)	2	178 (T)
292 (INT 7021)	2	178 (T)
357 (INT 7397)	5	179 (T)
404 (INT 7439)	6	180 (T)
409	6	180 (T)
2008	3	176
2010	3	176
2011	3	175
2016 (INT 7336)	3	177
2076 (INT 7338)	3	177
2082	2	178 (T)
2110	2	178 (T)
3003	5	179 (T)
3010 (INT 7418)	5	174
3041	5	174
4014	6	180 (T)
4015	6	180 (T)
4039	6	180 (T)

SECTION – II**PERMANENT NOTICES*****174 (19/16) INDIA – EAST COAST – Paradip Port – Coastline and Jetty.**

Source: Paradip Port Trust.

Chart 3041 [previous update 155/16]

Insert	accompanying block showing amendments to Coastline and Jetty centered on:	20° 15′.75N., 86° 40′.65E.
--------	---	----------------------------

Chart 3010 (INT 7418) [previous update 151/16]

Insert	accompanying block showing amendments to Coastline and Jetty centered on:	20° 15′.82N., 86° 40′.30E.
--------	---	----------------------------

Chart 3010 (INT 7418) (PLAN) [previous update 151/16]

Insert	accompanying block showing amendments to Coastline and Jetty centered on:	20° 15′.82N., 86° 40′.16E.
--------	---	----------------------------

***175 (19/16) INDIA – WEST COAST – Approaches to Jaigarh and Angre Ports – Pilot Boarding Ground.**

Source: Jaigarh Port Trust.

Chart 212 [previous update 060/16]

Insert	 <i>Panamax and below</i>	17° 18′.55N., 73° 08′.04E.
--------	--	----------------------------

Chart 2011 [previous update NE 31 Dec 15]

Insert	 <i>Panamax and below</i>	17° 19′.00N., 73° 08′.00E.
--------	--	----------------------------

***176 (19/16) INDIA – WEST COAST – Karwar Naval Harbour – Lights.**

Source: INS Vikramaditya.

Chart 2008 [previous update NE 30 Jun 16]

Amend	colour of light to, “G”	14° 45′.05N., 74° 09′.94E.
-------	-------------------------	----------------------------

colour of light to, “R”	14° 44′.07N., 74° 09′.87E.
-------------------------	----------------------------

Chart 2010 [previous update NE 30 Apr 16]

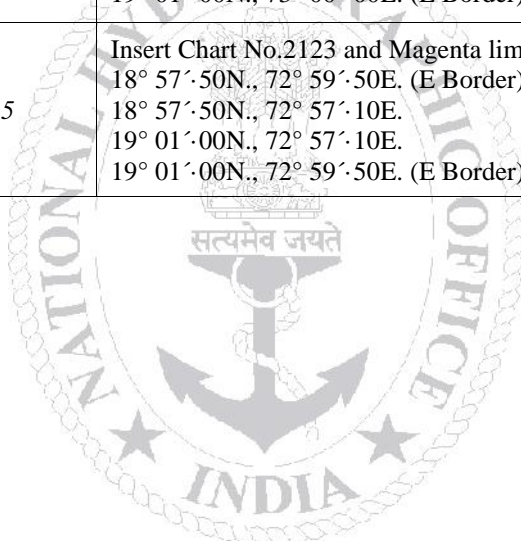
Amend	colour of light to, “G”	14° 45′.05N., 74° 09′.94E.
-------	-------------------------	----------------------------

colour of light to, “R”	14° 44′.07N., 74° 09′.87E.
-------------------------	----------------------------

***177 (19/16) Miscellaneous updates to charts**

Source: NHO Dehradun.

Chart	Previous Updates	Details
204	<i>131/16</i>	Insert Chart No.2125 and Magenta limit as follows: 21° 51′.30N., 69° 01′.00E. 21° 59′.80N., 69° 01′.00E. 21° 59′.80N., 69° 15′.00E. 21° 51′.30N., 69° 15′.00E. 21° 51′.30N., 69° 01′.00E.
211	<i>084/16</i>	Insert Chart No.2123 and Magenta limit as follows: 18° 57′.50N., 73° 02′.00E. (E Border) 18° 57′.50N., 72° 57′.10E. 19° 01′.00N., 72° 57′.10E. 19° 01′.00N., 73° 02′.00E. (E Border)
2016 (INT 7336)	<i>NC 31 Mar 16</i>	Insert Chart No.2123 and Magenta limit as follows: 18° 57′.50N., 73° 00′.00E. (E Border) 18° 57′.50N., 72° 57′.10E. 19° 01′.00N., 72° 57′.10E. 19° 01′.00N., 73° 00′.00E. (E Border)
2076 (INT 7338)	<i>167/15</i>	Insert Chart No.2123 and Magenta limit as follows: 18° 57′.50N., 72° 59′.50E. (E Border) 18° 57′.50N., 72° 57′.10E. 19° 01′.00N., 72° 57′.10E. 19° 01′.00N., 72° 59′.50E. (E Border)



SECTION – III

TEMPORARY AND PRELIMINARY NOTICES

***178 (T) (19/16) INDIA – WEST COAST – Gulf of Khambhat – Dahej Harbour – Light.**

Source: DLL Mumbai.

- Following light is temporarily unlit.

Sl No	Light	Position	Light Characteristics	Charts Affected
01	Luhara Point Light	21° 39'·57N., 72° 32'·82E.	Fl.15s30m11M	292 (INT 7021) – 254 (INT 7331) – 208 – 2082 – 2110.
2.	Mariners are advised to navigate with caution in the area and contact local port authorities for more details.			

***179 (T) (19/16) INDIA – EAST COAST – Pudduherry Harbour – Data Buoy.**

Source: IH 102, INS Darshak.

- An oceanographic data observation buoy laid in position 11° 55'·29N., 79° 51'·14E.
- Mariners are advised to exercise caution.

Charts affected – 32 (INT 754) – 357 (INT 7397) – 3003.

***180 (T) (19/16) INDIA – ANDAMAN SEA – Lights.**

Source: DLL Port Blair.

- Following lights are temporarily unlit.

Sl No	Light	Position	Light Characteristics	Charts Affected
01	Koltapalm Light	07° 00'·94N., 93° 56'·02E.	Fl(2).10s42m10M	409 – 4039.
02	Wilson Light	12° 08'·77N., 92° 57'·40E.	Fl(2).20s15m10M	404 (INT 7439) – 4015
03	South Button Light	12° 13'·43N., 93° 01'·19E.	Fl.15s25m8M	404 (INT 7439) – 4014 – 4015
04	Strait Island Light	12° 11'·88N., 92° 55'·99E.	Fl(3).20s27m8M	404 (INT 7439) – 4014 – 4015
2.	Mariners are advised to navigate with caution in the area and contact local port authorities for more details. .			

SECTION – IV

MARINE INFORMATION

1. NAVTEX TRANSMISSION

Status of MSI Promulgation by NAVTEX Stations is as follows:-

Mumbai - Temporarily Out of Operation

Chennai - Temporarily Out of Operation

Mauritius (Cassis) - Operational

Seychelles (Mahe) - Operational

Following new Navtex stations along the Indian coast are operating on trial basis:-

INTERNATIONAL NATIONAL NAVTEX FREQUENCY - 518 kHz								
Sl.	Station Name	B1	Broad Cast Timings in UTC					
(a)	Veraval	H	0110	0510	0910	1310	1710	2110
(b)	Vengrula Point	J	0130	0530	0930	1330	1730	2130
(c)	Muttam Point	L	0150	0550	0950	1350	1750	2150
(d)	Porto Novo	O	0220	0620	1020	1420	1820	2220
(e)	Vakalpudi	Q	0240	0640	1040	1440	1840	2240
(f)	Balasore	S	0300	0700	1100	1500	1900	2300
(g)	Keating Point	V	0330	0730	1130	1530	1930	2330

2. MISIDENTIFYING FISHING BOATS AS PIRATE SKIFFS

All merchant vessels entering Indian EEZ are advised that dense fishing activity may be encountered off West Coast of India. Fishing is generally carried out by mechanized boats and single hull boats with outboard motors carrying 4-5 crew using long lines upto 50 NM from coast. The vessels traversing the nets are likely to be approached by fishing boats for safeguarding nets and lines and should not be mistaken as skiffs and PAG's. Masters of vessels to report any suspicious activity of fishing vessels immediately to MRCC (Mumbai) on telephone +91-22-24388065, 24316558, Email: - indsar@vsnl.net, or icgmrc_mumbai@mtnl.net . Any suspicious activity of skiffs / boats to be photographed if possible. Merchant vessels with armed guards on board are to report presence of guards to Indian Navy/Coast Guard while transiting Indian EEZ.

(Source - NAVAREA VIII Warning 100/12)

3. DISPLAY ANOMALIES IN ECDIS

(a) Mariners are advised that the International Hydrographic Organization (IHO) check data set shows that some ECDIS systems fail to display some significant underwater features in the standard display mode. The use of this check data set, issued through ENC service providers and available from the IHO website www.iho.int, to check the operation of ECDIS is strongly recommended. JRC has confirmed that certain versions of JRC ECDIS fail to display some types of wreck and obstructions, including stranded wrecks, in any display mode.

Where JRC ECDIS is in use, paper charts should be the primary means of navigation until the ECDIS has been proved to operate correctly. See www.jrc.co.jp/eng/product/marine/whatsnew/20120313/index.html for further information.

(b) Some Electronic Chart Display and Information Systems (ECDIS) may exhibit operating anomalies. The International Maritime Organization's (IMO) circular SN.1/CIRC.312 pages /imodocs.aspx (registration required) lists identified anomalies, Their characteristics and remedial advice. Mariners are reminded that they should access the International Hydrographic Organization (IHO) data presentation and performance check (DPPC) dataset (news links of <http://www.iho.int/srv1>) and ensure that all installed ECDIS units are checked.

(Source - NAVAREA VIII Warning 141/12 & 529/12)

4. **SAFETY FAIRWAYS, RECOMMENDED ROUTES, TRAFFIC SEPARATION SCHEME**

The Director General Shipping has established Safety fairways, recommended routes and traffic separation scheme (TSS) in restricted Indian waters including the offshore development area to enhance safety of navigation. The details of coordinates for the above have been published in the fortnightly Indian Notices to Mariners Edition No 14 of 2008 (16th July 2008).

(a) Safety Fairways: An area within which permits are not granted for the erection of oil or gas related structures. The use of a safety fairway is not usually mandatory, but is recommended. Safety fairways have been promulgated in and round offshore development area in Arabian Sea up to the Exclusive Economic Zone (EEZ) due to increased weather related marine accidents and dense traffic. These are mandatory for all Indian ships and vessels transiting through the ODA and recommendatory for all foreign flag ships and vessels irrespective of size.

(b) Recommended routes have been established along the coast of Gujarat. These are to assist mariners to navigate safely in order to represent the best routes for crossing traffic and to minimize head-on encounters in vicinity of Oilfield Development Areas and regulate coastal traffic. Mariners are advised to keep 1 to 2 miles starboard of the shown routes consistent with Rules of the Road.

(c) Traffic Separation Schemes (TSS). The TSS off Mumbai harbour is mandatory for all Indian and foreign flag ships and vessels entering and leaving Mumbai harbour and Jawaharlal Nehru Port Trust (JNPT)/ Nhava-Sheva harbour irrespective of size.

5. **GAGAN SYSTEM COMMISSIONED FOR OPERATIONS**

The GAGAN System is now commissioned for safety of life, civil aviation, and en- route operations in addition to all other non-aviation applications. The GAGAN signal is being broadcasted through GSAT-8 and GSAT-10 with PRN127 & 128 respectively.

All the GPS users are requested to enable SBAS functionality in their receivers, configure it to receive PRN-127& 128 and avail the benefits of GAGAN in terms of increased accuracy and reliability. There may be occasional signal outages due to system up-gradation activities.

6. **USAGE OF THURAYA/ IRRIDUM AND SATELLITE PHONE**

The use of Thuraya, Iridium and other such satellite phone is banned in India under Sec 6 of Indian Wireless Act and Sec 20 of Indian Telegraph Act. It is intimated to all shipping companies/ shipping agents that use of Thuraya/ Iridium and other such satellite phones are banned in Indian waters and seafarers should not use the same.

Satellite phones can be used only after no objections certificate issued by department of telecommunication (DOT) on a case to case basis. The shipping agents should mandatorily intimate the details of person carrying Thuraya and the particulars of Thuraya, Iridium and other such sets in pre arrival notification on security (PANS).

The unauthorized holders of Thuraya/ Iridium and other such Satellite phones can be prosecuted under Sec 6 of Indian Wireless Act and Sec 20 of Indian Telegraph Act.

7. **CAUTIONARY NOTE**

There is a finite amount of lag between publication of large and small scale Indian Nautical Charts. To avoid uncertainty the mariners are advised to use large scale charts for coastal navigation wherever applicable and available. In addition, mariners are to refer large scale charts in conjunction with small scale charts in areas where both overlap during both planning and conduct of passage.

List of Indian Chart Agents

M/s OSA Books and Periodicals R-246, Greater Kailash –I, New Delhi - 110 048 Tel/Fax: +91-11-26418643, 46557337, Mob: 9971093992 Email: rpani246@gmail.com	M/s VDO Marine Insrtuments Shanghar Building, PO Bag No – 645, 45/271, Corner of Bristow & Naval Road, Willingdon Island, Kochi – 682 003 Tel: +91 484 2667157 Fax: +91 484 2667121 Email: atmain@md4.vsnl.net.in
M/s Global Charts & Nav. Aids Pvt. Limited 1A, Goa Mansion, Ground Floor, 58, Dr. Sunderlal Bahl Path (Goa Street), Fort, Mumbai - 400 001 Tel: 91-22-22626318, 22626380 Fax: 91-22-22621488 Email: sales@globalcharts.in Web: www.globalcharts.com.sg	E.W.Liner Charts & Publication (India) 2/524, Sandeep Road, Chinna Neelangarai, Chennai - 600041 Tele: +91-44-24490668 Fax: +91-44-24491668 Mob No : +91-9003245348 Email: ewl-india@ewliner.com Web: www.ewliner.com
M/s C & C Marine Combine 25 Bank Street, 1 st Floor, Fort Mumbai - 400 023 Tel: 91-22- 22660017/0018/0525/1937 Ext: 32 Tel: 91-22-22672143 Fax: 91-22-22670896 Email: vijay@ccmarine.in, sales@ccmarine.in	Gujarat Pipavav Port Limited PO – Uchhaiya, Dist – Amereli, Gujarat – 365 560 Tele: +91- 2794302400 Fax: 302413 (Only for Pipavav Port Chart)
M/s SVR Chart Agencies Door No.50-81-48/4, Seetammapeta, Visakhapatnam – 530 016 Tele/ Fax: 0891-2799471, Cell: +91-9849120988, 9885797333 Email : mahalakshmitravels99@gamil.com	M/s Jeppesen India Pvt. Ltd 505, Raheja Arcade, Sector 11 CBD, Belapur, Navi Mumbai – 400 614 Tel: +91 22 6510 3668, Fax: +91 22 55939504 Mob: +9322238542 Email: RajShekhar.Chakravorty@jeppesen.com, info@jeppesen.com Website: www.jeppesen.com
M/s JM Maritime Services 24/24C Kavarana Building, Ground Floor, Wadi Bunder, P.D. Mellow Road, Mumbai – 400 009 Tel: +91 22 23736956, Fax: 022 - 23725083 Cell: +91 9820788357 Email : jmms@mtnl.net.in, charts@mtnl.net.in	M/s Global Marine Infratech Pvt. Ltd. Ground Floor, Siksha Sandan, Plot No. ND7, VIP Area, IRC Village, Bhubaneswar – 751015 Tel: +91-674-2550599, Fax: +91-674-2551899 Cell:- +91-9337477799, 7077702499 Email: tusarkantha@gmiindia.in Web: www.gmiindia.in
Lift o Marine Allen's Mansion, Flat C6 Nungi Station Road, Bata Nagar Kolkata – 700 140 Tel: +91 9836972027 Fax: 033 24924283 Email: sankar@liftomarine.org Web: www.liftomarine.org	M/s L. R. Marine Services 301, 3rd Floor, Biry House, 265, Perin Nariman Street, Fort, Mumbai - 400 001. Tel: +91-22-2269 1535, Fax: +91-22-6635 9148 Cell No: +91 8108926880/ +91 98214 60258 Email: lrcharts@gmail.com, lrmarine@live.com
M/s Engineering Logistics Executive Multi Services Elems Charts, Door No: 61-4-45-A/4, Prakash Nagar, Malkapuram Visakhapatnam – 530 011 Mob: +91 9133871827 Email: sales@elemscharts.in Web: www.elemscharts.in	M/s IIC Technologies Limited 8-2-350/5/B-22, Road No. 3, Banjara Hills, Hyderabad – 500 034, Telangana Tel: +91 4039144444 Fax: +91 4039144455 Email: somnath.marthi@iictechnologies.com Web: www.iictechnologies.com
M/s Aatash Computer & Communications Pvt. Ltd. 213, Devarc Commercial Complex Nr. Iscom Circle (above Woodland Showroom) S. G. Highway Ahmedabad – 380 015 Mob: +91 7926923982 Email: jyoti@aatash.com, zubin@aatash.com	M/s Zenith Surveys (I) Pvt. Ltd. Lakhani's Plam View, First Floor, Office No. 889, Sector 48, Nerul, Navi Mumbai – 400 706 Tel/ Fax: +91-22- 27708011 Email: zenithsurveys703@gmail.com, nyvmane@yahoo.com Web: www.zenithsurvey.com

SECTION – V

NAVAREA – VIII WARNINGS IN FORCE

1. For details of NAVAREA limits and organisation/coordination, please refer to Notice No. 12 of the Special edition of Indian Notice to Mariners – 2012.

2. NAVAREA VIII Warnings in force as on 30 Sep 16:

2015 SERIES – 287 334 386

2016 SERIES – 064 371 387 432 464 470 474 475 507 509 545 546 556 558 565 571 572 573 576
578 583 594 595 597 599 600 601 602 603 604 605 606 607 608 609

3. NAVAREA VIII Warnings issued during the period from 16 Sep to 30 Sep 16 (both dates inclusive) are as tabulated below:–

559. India West Coast – off Trivandrum. Charts 22 222 INT 71. Rocket launch from Thumba (08-31.98N 076-52.05E) scheduled on 21 Sep 16 from 0530-0730 UTC.
2. Danger sector (A) Radius of 05 NM from thumba between azimuth 190 and 300. (B) Radii of 45 and 75 NM from thumba between azimuth 220 and 260.
3. Cancel this MSG 210830 UTC Sep 16.
560. India East Coast – off Gopalpur. Charts 31 352 353 3005 INT 706. Army air defence firing and BPTA flight scheduled on 22, 24, 26, 27, 28 and 30 Sep 16 from 0130-0730 and 0830-1430 UTC.
2. Firing area bounded by (a) 19-14.60N 084-53.70E (b) 19-07.39N 085-35.94E (c) 18-33.61N 084-53.74E and arc of 41 NM radius joining point b and c. Safe flying height 24400 metres.
3. Flight area bounded by 19-17.67N 084-55.21E, 19-10.75N 084-47.38E, 18-56.03N 084-52.64E, 19-12.33N 085-14.92E. Safe flying height 2150 metres.
4. Cancel this MSG 301530 UTC Sep 16.
561. India West Coast – Okha. Charts 21 203 2068 INT 705. Firing by naval coast battery scheduled on 22 Sep 16 from 0530-0730 UTC.
2. Danger area extending seaward upto 12 NM within bearing 300 to 020 from 22-28.04N 069-04.99E. Safe flying height 12800 metres.
3. Cancel this MSG 220830 UTC Sep 16.
562. North Indian Ocean – off Dondra Head. Charts 33 264 INT 71. Naval firing scheduled on 20 Sep 16 from 0330-0630 UTC in danger area extending 5 NM from 05-30N 080-30E. Safe flying height 4000 metres.
2. Cancel this MSG 200730 UTC Sep 16.
563. NAVAREA VIII Warnings in force as on 16 Sep 16. <u>2015 SERIES</u> - 287 334 386 735 <u>2016 SERIES</u> - 064 371 387 420 432 439 445 464 470 474 475 488 507 508 509 514 530 540 545 546 548 549 554 555 556 557 558 559 560 561 562 (a) NAVAREA VIII warnings less than 42 days promulgated via SafetyNet. (b) Text of NAVAREA VIII warnings inforce including those which no longer broadcast available in www.hydrobharat.gov.in .
2. Cancel this MSG 231000 UTC Sep 16.
564. India West Coast – Off Mumbai. Charts 211 255 INT 71. Two men reported missing in position 18-38.1N 072-21.5E since 171844 UTC Sep 16.
2. Vessels transiting to keep sharp lookout and render assistance. Report sighting to MRCC Mumbai.
565. India West Coast – off Mumbai. Charts 211 255 INT 71. Fishing vessel Datta Sai reported sunk in position 19-00N 072-10E on 17 Sep 16. 02 crew missing.
2. Vessels transiting to keep sharp lookout and render assistance. Report sighting to MRCC Mumbai.
566. Cancel NAVAREA VIII 564 and this MSG.
567. India East Coast – Central Bay of Bengal. Charts 32 INT 71. Firing by CG aircraft scheduled daily from 22-30 Sep 16 from 0130 - 1130 UTC in danger area bounded within 13-30N to 14-30N and 082-00E to 082-40E. Safe flying height 2000 metres.
2. Cancel this MSG 301230 UTC Sep 16.
568. Indian Ocean – off Reunion Island. Charts INT 70 71. Gunnery exercise scheduled on 22 Sep 16 from 0900 - 1400 UTC in area bounded by 21-12.00S 054-57.00E, 21-39.02S 054-33.30E, 21-19.30S 054-25.54E, 21-26.00S 055-02.30E.
2. Cancel this MSG 221500 UTC Sep 16.

569.	India East Coast. Charts 262 355 INT 706. Rig list correct at 191003 UTC Sep 16. ABAN II 16-23.23N 082-01.41E RIG 805 16-40.18N 082-25.72E SAGAR RATNA 16-20.43N 081-59.35E New SAGAR BHUSHAN 16-31.49N 082-23.61E GSF – 140 08-56.45N 079-04.57E New DDKG 2 16-41.80N 082-41.60E DS MATDRILL 15-38.22N 080-48.67E New SAGAR VIJAY 16-19.41N 080-10.51E New 2. Wide berth requested. 3. Cancel NAVAREA VIII MSG 439.
570.	India West Coast – Mumbai. Charts 2016 INT 71. SCI Pawan reported life raft fallen overboard 18-58.36N 072-57.27E on 181030 UTC Sep 16. 2. Cancel this MSG 211030 UTC Sep 16.
571.	Bay of Bengal – Yangon River Approaches. Charts 41 4019 INT 71. Additional lower western buoy (16-24.2N 096-21.1E) and thura phyo kyaw lin wreck buoy (16-24.0N 096-21.1E) reported adrift.
572.	Bay of Bengal – Sittwe Harbour. Charts 31 3019 INT 71. Isolated danger buoy marking index wreck (20-07.75N 092-54.37E) reported adrift.
573.	North Andaman Sea. Charts 41 INT 71. Zawtika wellhead platform 4,5,6,7 installed at 14-01.56N 095-49.36E, 14-24.53N 096-02.04E, 14-08.48N 095-51.41E, 14-10.63N 096-04.80E.
574.	Cancel NAVAREA 420 445 548 and this MSG.
575.	India West Coast – N Arabian Sea. Charts 22 255 293 INT 71. Firing by naval ships scheduled on 26 Sep 16 from 0630-1430 UTC in danger area bounded by 18-06N 070-39E, 17-49N 071-21E, 18-05N 071-37E, 18-22N 071-04E. 2. Cancel this MSG on 261530 UTC Sep 16.
576.	India West Coast – Off Mumbai. Charts 293 INT 71. CS dependable progressing inspection and cable burial using rov along 18-59.7N 072-34.1E, 18-49.5N 072-10.4E, 18-48.1N 072-10.2E, 18-46.1N 072-10E from 21 – 24 Sep 16 and 17-15.8N 071-48.1E, 17-09.7N 071-45.2E, 17-09.4N 071-45E from 25 Sep – 04 Oct 16. 2. Wide berth requested. 3. Cancel this MSG on 041830 UTC Oct 16.
577.	India East Coast. Charts 262 355 INT 706. Rig list correct at 211003 UTC Sep 16. ABAN II 16-23.23N 082-01.41E RIG 805 16-40.18N 082-25.72E SAGAR RATNA 16-20.43N 081-59.35E NEW SAGAR BHUSHAN 16-31.49N 082-23.61E GSF – 140 08-56.45N 079-04.57E NEW DDKG 2 16-41.80N 082-41.60E DS MATDRILL 15-38.22N 080-48.67E NEW SAGAR VIJAY 16-19.41N 082-10.51E NEW 2. Wide berth requested. 3. Cancel NAVAREA VIII MSG 569.
578.	India West Coast – Gulf of Khambhat. Charts 254 INT 71. Luhara LT (21-39N 072-33E) unlit.
579.	Cancel NAVAREA VIII 560 and this MSG.
580.	Cancel Navarea VIII 508/16 and this MSG. INTM 173/16 refers.
581.	Bay of Bengal – Indian Ocean. Charts 32 33 371 INT 71. PSLV launch scheduled from sriharikota (13-43.9N 080-14.2E) from 26 – 28 Sep 16 between 0330 - 0730 UTC 2. Danger zone bounded by ZONE -1: Circle of 10 NM around launcher ZONE-2: Sector between 20 and 60 NM from launcher between azimuth 130 to 150 ZONE-3: 12-05N 081-10E, 12-30N 081-35E, 11-30N 082-20E, 11-05N 081-55E ZONE-4: 10-40N 082-15E, 11-00N 082-40E, 10-15N 083-15E, 09-55N 082-50E ZONE-5: 08-35N 083-20E, 08-35N 083-50E, 07-45N 083-50E, 07-45N 083-20E ZONE-6: 04-55S 081-45E, 05-10S 082-55E, 07-55S 082-15E, 07-40S 081-05E ZONE-7: 55-40S 068-30E, 56-25S 071-20E, 64-20S 067-40E, 63-55S 064-50E 3. Cancel this MSG 280830 UTC Sep 16.
582.	India East Coast – off Dhamra Port. Charts 32 351 INT 71. Experimental flight trial scheduled from ITR on 27 and 28 Sep 16 from 0330-0730 UTC in danger zone bounded by 21-22.04N 086-56.36E, 21-09.76N 086-50.58E, 19-37.36N 087-31.92E, 20-02.60N 088-35.28E, 21-37.29N 087-52.26E. 2. Cancel this MSG 280830 UTC Sep 16.
583.	Andaman Sea – Great Nicobar Island. Charts 409 4182 INT 71. Koltapalm LT (07-01N 093-56E) unlit.

584.	Cancel NAVAREA VIII 530 540 and this MSG.								
585.	India West Coast – off Netrani I. Charts 22 216 2072 INT 71. Firing by naval ships scheduled on 28 Sep 16 from 0230 to 1430 UTC in danger area bounded within 13-55.20N to 14-07.20N and 074-13.60E to 074-25.07E. 2. Cancel this MSG 281530 UTC Sep 16.								
586.	Bay Of Bengal – off Trincomalee. Charts 359 3014 INT 71. Firing by naval ships scheduled on 30 Sep 16 from 0530-1030 UTC in danger area bounded within 08-20N to 08-30N and 081-30E TO 081-40E. safe flying height 10000 metres. 2. Cancel this MSG 301130 UTC Sep 16.								
587.	India West Coast – South-East of Tapti Oda. Charts 21 210 INT 71. firing by CG aircraft scheduled on 26 Sep 16 from 0330-1130 UTC in danger area bounded by 20-13.3N 071-59.0E, 20-13.3N 072-08.0E, 20-06.0N 072-06.9E, 20-06.0N 071-57.7E. Safe flying height 1850 metres. 2. Cancel this MSG 261230 UTC Sep 16.								
588.	Cancel NAVAREA VIII 488 582 and this MSG.								
589.	<u>NAVAREA VIII Warnings in force as on 23 Sep 16.</u> 2015 SERIES - 287 334 386 735 2016 SERIES - 064 371 387 432 464 470 474 475 507 509 514 545 546 556 557 558 565 567 571 572 573 575 576 577 578 581 583 585 586 587 588 (a) NAVAREA VIII warnings less than 42 days promulgated via SafetyNet. (b) Text of Navarea VIII warnings inforce including those which no longer broadcast available in www.hydrobharat.gov.in . 2. Cancel this MSG 301000 UTC Sep 16.								
590.	India East Coast – off Dhamra Port. Charts 31 351 INT 71. Experimental flight trial scheduled from ITR on 01 and 02 Oct 16 from 0330-0730 UTC in danger zone bounded by 21-22.04N 086-56.36E, 21-09.76N 086-50.58E, 19-37.36N 087-31.92E, 20-02.60N 088-35.28E, 21-37.29N 087-52.26E. 2. Cancel this MSG 020830 UTC Oct 16.								
591.	India East Coast – Chennai. Charts 313 3001 3004 INT 71. Firing by Naval Coast Battery scheduled on 30 Sep 16 from 0530 - 0730 UTC. 2. Danger sector extending up to 5.5 NM between bearing 045 and 075 from 13-07.02N 080-18.01E. Safe flying height 12800 metres. 3. Cancel this MSG 300830 UTC Sep 16.								
592.	NE Indian Ocean. Chart INT 71. SLFV Sara reported adrift 02-28S 078-00E at 240115 UTC Sep 16 due engine failure. 2. Cancel this MSG 270115 UTC Sep 16.								
593.	Cancel NAVAREA VIII 581 and this MSG.								
594.	India West Coast – off New Mangalore. Charts 272 INT 71. Magellen 2 while towing unmanned barge B42 lost tow wire with winch. Barge B42 with 100 and 900 metres tow wire on fwd and aft side drifting ne at 0.7-1.6 kts in vicinity of 12-51.2N 073-48.8E at 270230 UTC Sep 16. 2. Wide berth requested.								
595.	Andaman Islands. Charts 4015 INT 71. South Button Lt (12-14N 093-01E), Strait Island Lt (12-12N 092-56E), Wilson Lt (12-09N 092-58E) unlit.								
596.	Cancel NAVAREA VIII 590 and this MSG.								
597.	Lakshadweep Sea – off Colombo. Charts 32 264 INT 71. Naval firing scheduled on 02 Oct 16 from 0030-0630 UTC in danger area bounded within 06-35N TO 06-50N AND 079-25E TO 079-39E. Safe flying height 1000 metres. 2. Cancel this MSG 020730 UTC Oct 16.								
598.	north indian ocean - off dondra head . chart int 71 . slfv sadev reported adrift 04-37n 083-31e at 270245 utc sep 16 due engine failure 2. cancel this msg 300245 utc sep 16								
599.	Bay of Bengal – off Sriharikota. Charts 32 356 INT 71. Rocket launch from Sriharikota (13-41N 080-14E) scheduled from 04 – 08 Oct 16 between 0530 - 0730 UTC. 2. Danger area bounded by circle of 10 NM around launcher and sector between 45 and 75 NM from launcher between azimuth 70 to 100. Safe flying height 100 km. 3. Cancel this MSG 080830 UTC Oct 16.								
600.	India West Coast – off Trivandrum. Charts 22 222 INT 71. Rocket launch from thumba (08-31.98N 076-52.05E) scheduled on <table data-bbox="284 1899 703 2024"> <thead> <tr> <th>Date</th><th>Time (Utc)</th></tr> </thead> <tbody> <tr> <td>04 Oct 16</td><td>0530-0730</td></tr> <tr> <td>05 Oct 16</td><td>0830-1030</td></tr> <tr> <td>06 Oct 16</td><td>0530-0730</td></tr> </tbody> </table> 2. Danger sector (a) Radius of 05 NM from Thumba between azimuth 190 and 300.	Date	Time (Utc)	04 Oct 16	0530-0730	05 Oct 16	0830-1030	06 Oct 16	0530-0730
Date	Time (Utc)								
04 Oct 16	0530-0730								
05 Oct 16	0830-1030								
06 Oct 16	0530-0730								

600.	Continued. (b) Radii of 45 and 75 NM from Thumba between azimuth 220 and 260. 3. Cancel this MSG 060830 UTC Oct 16.																
601.	India West Coast – Kochi. Charts 22 220 2029 INT 71. Firing by Naval Coast Battery scheduled on <table> <tr> <th>DATE</th><th>TIME (UTC)</th></tr> <tr> <td>04 OCT 16</td><td>0900-1200</td></tr> <tr> <td>07 OCT</td><td>0900-1200</td></tr> <tr> <td>14 OCT</td><td>0900-1200</td></tr> <tr> <td>18 OCT</td><td>0900-1200</td></tr> <tr> <td>21 OCT</td><td>0900-1130</td></tr> <tr> <td>25 OCT</td><td>0900-1200</td></tr> <tr> <td>28 OCT</td><td>0900-1200</td></tr> </table> 2. Danger area bounded by 09-57.5N 075-59.5E, 09-57.7N 076-14.2E, 09-44.0N 076-17.5E, 09-42.5N 076-09.5E . Safe flying height 10000 metres. 3. Cancel this MSG 281300 UTC Oct 16.	DATE	TIME (UTC)	04 OCT 16	0900-1200	07 OCT	0900-1200	14 OCT	0900-1200	18 OCT	0900-1200	21 OCT	0900-1130	25 OCT	0900-1200	28 OCT	0900-1200
DATE	TIME (UTC)																
04 OCT 16	0900-1200																
07 OCT	0900-1200																
14 OCT	0900-1200																
18 OCT	0900-1200																
21 OCT	0900-1130																
25 OCT	0900-1200																
28 OCT	0900-1200																
602.	India West Coast – Mumbai. Charts 21 211 255 293 2016 INT 71. Firing by Naval Coast Batteries scheduled on 05 Oct 16 from 0400 - 1030 UTC in danger areas bounded by (A) 18-54.7N 072-50.6E, 18-50.0N 072-54.5E, 18-54.5N 072-54.0E, 18-55.2N 072-54.9E from Middle Ground. (B) 18-54.7N 072-50.6E, 18-50.0N 072-54.5E, 18-48.0N 072-52.0E, 18-54.1N 072- 49.8E from Oyster Rock. (C) 18-47.0N 072-35.0E, 18-53.6N 072-48.8E, 19-00.0N 072-44.1E, 19-00.0N 072- 35.0E from Colaba Point. 2. Safe flying height 2000 metres. 3. Cancel this MSG 051130 UTC Oct 16.																
603.	India West Coast – N Arabian Sea. Charts 22 255 293 Int 71. Firing by Naval ships scheduled on 05 Oct 16 from 0430-1330 UTC in danger area bounded by 18-06N 070-39E, 17-49N 071-21E, 18-05N 071-37E, 18-22N 071-04E. 2. Cancel this MSG on 051430 UTC Oct 16.																
604.	India East Coast – off Gopalpur. Charts 31 352 353 3005 INT 706. Army Air defence firing and BPTA flight scheduled on 06, 08, 15, 24, 26, 27 and 29 Oct 16 from 0130-0730 and 0830-1430 UTC. 2. Firing area bounded by (a) 19-14.60N 084-53.70E (b) 19-07.39N 085-35.94E (c) 18-33.61N 084-53.74E and arc of 41 NM radius joining point b and c. Safe flying height 6100 metres. 3. Flight area bounded by 19-17.67N 084-55.21E, 19-10.75N 084-47.38E, 18-56.03N 084-52.64E, 19-12.33N 085-14.92E. Safe flying height 1525 metres. 4. Cancel this MSG 291530 UTC Oct 16.																
605.	Bay of Bengal – off Kankasanturai. Charts 32 358 INT 71. Firing by Naval ships scheduled on 06 Oct 16 from 0530-0730 UTC in danger area extending 5 NM from 09-55N 080-33E. Safe flying height 3000 metres. 2. Cancel this MSG 060830 UTC Oct 16.																
606.	India East Coast. Charts 262 355 INT 706. Rig list correct at 301006 UTC Sep 16. <table> <tr> <td>ABAN II</td><td>16-23.23N 082-01.41E</td></tr> <tr> <td>RIG 805</td><td>16-40.18N 082-25.72E</td></tr> <tr> <td>SAGAR RATNA</td><td>16-20.43N 081-59.35E</td></tr> <tr> <td>SAGAR BHUSHAN</td><td>16-31.49N 082-23.61E</td></tr> <tr> <td>GSF – 140</td><td>08-56.45N 079-04.57E</td></tr> <tr> <td>DDKG 2</td><td>16-41.52N 082-42.73E NEW</td></tr> <tr> <td>DS MATDRILL</td><td>15-38.22N 080-48.67E</td></tr> <tr> <td>SAGAR VIJAY</td><td>16-19.41N 082-10.51E</td></tr> </table> 2. Wide berth requested. 3. Cancel NAVAREA VIII MSG 577.	ABAN II	16-23.23N 082-01.41E	RIG 805	16-40.18N 082-25.72E	SAGAR RATNA	16-20.43N 081-59.35E	SAGAR BHUSHAN	16-31.49N 082-23.61E	GSF – 140	08-56.45N 079-04.57E	DDKG 2	16-41.52N 082-42.73E NEW	DS MATDRILL	15-38.22N 080-48.67E	SAGAR VIJAY	16-19.41N 082-10.51E
ABAN II	16-23.23N 082-01.41E																
RIG 805	16-40.18N 082-25.72E																
SAGAR RATNA	16-20.43N 081-59.35E																
SAGAR BHUSHAN	16-31.49N 082-23.61E																
GSF – 140	08-56.45N 079-04.57E																
DDKG 2	16-41.52N 082-42.73E NEW																
DS MATDRILL	15-38.22N 080-48.67E																
SAGAR VIJAY	16-19.41N 082-10.51E																
607.	India West Coast - Gulf of Kachchh. Charts 203 INT 71. Salaya channel buoy Ranwara (22-39N 069-20E) missing.																
608.	Cancel NAVAREA VIII 735/15 and this MSG.																
609.	<u>NAVAREA VIII Warnings in force as on 30 Sep 16.</u> <u>2015 Series</u> - 287 334 386 <u>2016 Series</u> - 064 371 387 432 464 470 474 475 507 509 545 546 556 558 565 571 572 573 576 578 583 594 595 597 599 600 601 602 603 604 605 606 607 608 (A) NAVAREA VIII Warnings less than 42 days promulgated via SafetyNet. (B) Text of NAVAREA VIII warnings inforce including those which no longer broadcast available in www.hydrobharat.gov.in . 2. Cancel this MSG 071000 UTC Oct 16.																

SECTION – VI
CORRECTIONS TO SAILING DIRECTIONS (PILOTS)

NIL

SECTION – VII

CORRECTIONS TO LIST OF LIGHTS

No	Name & Location	Position (Lat-Long)	Characteristics	Ht. mts	Range miles	Structure & Height (mts)	Remarks
F0636.8	- Kwada Bay. Breakwater. Head	14 45.05 N 74 09.94 E	FI G 5s	9	7	White square masonry tower 4	
F0636.9	- - Kwada Island	14 44.07 N 74 09.87 E	FI R 5s	13	7	Red square masonry tower 4	
F1005.6	- Ldg Lts 300.10°. Front	20 16.08 N 86 40.07 E	FI W 2s	30	6	Black and White bands	Channel marked by Lts in line
F1005.605	- - Middle	20 16.28 N 86 39.69 E	LFI W 5s	45	8	Black and White bands	
F1005.61	- - Rear	20 16.55 N 86 39.19 E	FIW 10s	60	12	Black and White bands	
F1005.611	Remove from list ; deleted						
F1005.612	- - Front	20 16.18 N 86 40.02 E	FI G 2s	30	6	Green and White bands	
F1005.6121	- - Rear	20 16.49 N 86 39.45 E	FI G 10s	45	6	Green and White bands	
F1005.613	Remove from list ; deleted						
F1005.614	- Starboard. Lts in line 330.10°. Front	20 16.05 N 86 39.98 E	FI R 2s	30	6	Red and White bands	
F1005.6141	- - - Rear	20 16.37 N 86 39.38 E	FI R 10s	45	6	Red and White bands	
F1005.8	- Ldg Lts 332.10°. Front	20 16.72 N 86 40.04 E	FI W 2s	50	8	Grey metal framework tower 50	Channel marked by Lts in line
F1005.81	- - Rear	20 16.79 N 86 40.00 E	FI W 5s	60	8	Grey metal framework tower 60	
F1005.811	- Starboard. Lts in line 332.10°. Front	20 16.76 N 86 40.07 E	FI G 2s	50	6	White tower, green bands	Mark starboard side of channel
F1005.812	- - - Rear	20 16.84 N 86 40.07 E	FI G 10s	33	6	Grey metal framework tower	
F1005.813	- Port. Lts in line 332.10°. Front	20 16.66 N 86 40.02 E	FI R 2s	28	6	Grey metal framework tower 28	Mark port side of channel
F1005.814	- - - Rear	20 16.74 N 86 40.02 E	FI R 10s	33	6	Grey metal framework tower 33	
F1005.851	- - - Rear	20 16.82 N 86 40.58 E	LFI G 10s	15	6	Grey metal framework tower	
F1224.9	- Koltapalm	07 00.94 N 93 56.02 E	FI(2)W 10s	42	10	White GI trestle tower 12	fl 1, ec 1, fl 1, ec 7 TE 2016

SECTION – VIII
CORRECTION TO LIST OF RADIO SIGNALS

INP 31(1), 2014

(Last correction: Edition No. 18 dated 16 Sep 2016)

NIL

INP 31(2), 2014

(Last correction: Edition No. 18 dated 16 Sep 2016)

NIL

INP 31(5), 2011

(Last correction: Edition No. 18 dated 16 Sep 2016)

NIL

INP 31(6), 2012

(Last correction: Edition No. 06 dated 16 Mar 2016)

NIL

SECTION – IX

REPORTING OF NAVIGATIONAL DANGERS

Appeal to all Mariners

1. Mariners at sea whilst on passage, or whilst entering / leaving ports / harbours and other waterways, are requested to look out for new or suspected dangers to navigation, changes in aids to navigation, or corrections to published charts and Sailing Directions. Whenever any such changes / dangers are observed, mariners are requested to notify the same to the Chief Hydrographer to the Government of India at the following address: -

National Hydrographic Office
107-A, Rajpur Road,
Dehradun - 248001
(UTTARAKHAND), INDIA
e-mail: - inho@navy.gov.in, msis-inho@navy.gov.in
Fax No.: +91-135- 2748373
WEB: www.hydrobharat.gov.in

Instructions for filling up IH 102

2. Kindly follow the instructions below in order to help the Hydrographic Office (the recipient) to quickly issue NAVAREA warning / Notice to Mariners for the benefit of all other mariners at sea.

Position Reporting

3. Accurate position or knowledge of position error is of great importance. Latitude and Longitude should only be used to specify position details when they have been fixed by GPS or Astronomical Observations. A full description of the method, equipment, time and datum (WGS 84/ Everest/ Other) used should be given. When position is defined by sextant angles or bearings (true or magnetic to be specified), more than two bearings should be used in order to provide a redundancy check. Distances observed by Radar should be corrected for index errors. Where position is derived after the event, from other observations and/or Dead Reckoning, the methodology of deriving the position should be included.

4. Paper Charts. A copy/tracing of largest scale chart is the best medium for forwarding details, the alterations and additions being shown thereon in red, but adequate details from the chart must be traced in black ink to enable the amendments to be fitted correctly.

5. ENCs. A Screen shot of largest scale usage band ENC with the alterations and additions being shown thereon in red. If it is to report an issue with the display of an ENC, a screen shot of the affected cell should be sent along with details of the ECDIS make and version in use at the time.

Depth Reporting

6. When soundings are obtained using echo sounders, the echo sounding trace should be duly annotated with date, times, position, depths, etc., and forwarded with the IH102. It is important to state whether the echo sounder is set to register depths below the surface or below the keel; in the latter case the vessel's draught should be given. Time and date should be given in order that corrections for the height of the tide may be made where necessary. The make, name and type of echo sounder should also be given.

7. For modern echo sounders that use electronic 'range gating', care should be taken that the correct range scale and appropriate gate width are in use. Older electro-mechanical echo sounders frequently record signals from echoes received back after one or more rotations of the stylus have been completed. Thus with a set whose maximum range is 500m, an echo recorded at 50m may be from depths of 50m, 550m or even 1050m. Soundings recorded beyond the set's nominal range can usually be recognised by the following:

- (a) the trace being weaker than normal for the depth recorded;
- (b) the trace passing through the transmission line;
- (c) the feathery nature of the trace.

As a check that apparently shoal soundings are not due to echoes received beyond the set's nominal range, soundings should be continued until reasonable agreement with charted soundings is reached. However, soundings received after one or more rotations of the stylus can still be useful and should be submitted if they show significant differences from the charted depths. Efforts should be made to identify and negate false echoes if any. The Mariners Handbook (NP100) and Notice 15 Special Edition of Notice to Mariners may be consulted.

8. Reports which cannot be confirmed or are lacking in certain details should not be withheld. Shortcomings should be stressed and any firm expectation of being able to check the information on a succeeding voyage should be notified.

9. Reports of **shoal soundings**, uncharted dangers and aids to navigation out of order should, at the mariner's discretion, also be made by radio to the nearest coast radio station. The draught of modern tankers in such that any uncharted depth under 30 meters or 15 fathoms may be of sufficient importance to justify a radio message.

10. Changes to Port information should be forwarded on Form IH.102A together with form IH.102. Form 102 A contains the information required for Sailing Directions and should be used as an *aide memoir*. The Mariners Handbook, NP100, Chapter 8 gives general instructions. Where there is insufficient space on the forms an additional sheet should be used.

Please Note: - An acknowledgement will be sent by National Hydrographic Office for Hydrographic Notes received. When a Notice to Mariners is issued, the sender's ship or name is quoted as authority unless the information is also received from other authorities/foreign Notices to Mariners. Further communication from National Hydrographic Office to the sender of Hydrographic Notes will only be necessary to verify unusual features or abnormal values reported.



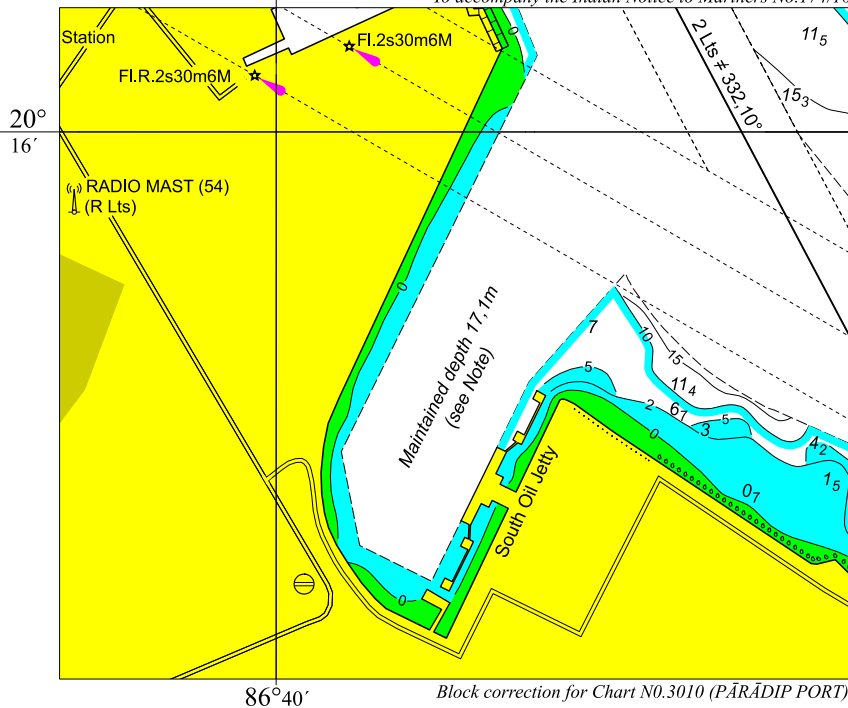
HYDROGRAPHIC NOTE				IH.102 (Revised 2012)	
For Forwarding information for Indian Charts, ENC's and Publications and reporting of ENC related issues					
Date			Ref. Number		
Name of the Ship or Sender					
Address					
Tel/FAX/E-mail address					
Observation Date			Time (UTC/IST)		
Object of Changes Observed (Tick appropriate)	<input type="checkbox"/> Bathymetry	<input type="checkbox"/> Nav. Dangers	<input type="checkbox"/> Nav. aids		
	<input type="checkbox"/> Designated Areas		<input type="checkbox"/> Others		
Geographical Position (See Instructions Overleaf)	Latitude			Longitude	
Position Method	<input type="checkbox"/> DGPS	<input type="checkbox"/> GPS	<input type="checkbox"/> Radar	<input type="checkbox"/> Others	
Datum Used	<input type="checkbox"/> WGS84	<input type="checkbox"/> Everest	<input type="checkbox"/> Others		
Charts Affected				Edition	
Latest Edition of Indian Notices to Mariners Held					
Tracing/Plot/Photograph if enclosed					
ENCs Affected					
Latest Update Disk Held					
Publication Affected				Edition	
Page No./Light No. etc					
Details:					
Limitations if any in Reporting the Changes Above					
Details of Documents/Photos attached:					
Signature of the Master/Reporter/Observer					

HYDROGRAPHIC NOTE FOR PORT INFORMATION (To accompany Form IH.102)				IH.102A (Revised 2012)	
Date				Ref. No.	
Name of the Ship or Sender					
Address					
Tel/Fax/E-mail					
1. NAME OF PORT					
Location		Latitude		Longitude	
2. GENERAL REMARKS					
Principal activities and trade					
Number of ships and tonnage handled per year					
Maximum size of draught of vessel handled					
Copy of Port handbook (if available)					
3. ANCHORAGES					
Type / Purpose					
Minimum depth at anchorage					
Shelter afforded					
Holding ground					
Recommended pilotage to the anchorage					
4. PILOTAGE					
Authority for request					
Embarkation position					
Regulations					
Documents to be provided					
Recommended pilotage to approach of Harbour and Berths					
Information on VTMS					
5. DIRECTIONS					
Entry and Berthing Information					
Tides (Height)					
Tidal Stream Information					
Wind Speed and Direction					
Navigational Aids (Beacons / Buoys / Lights / Etc.)					
6. POLLUTION CONTROL					
Local regulation in force (If Any)					
7. TUGS					
Number available / Tug type					
Maximum HP / Bollard pull					

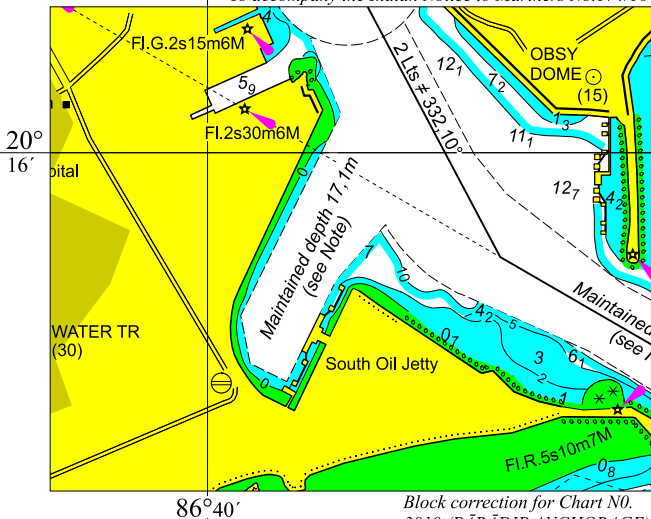
7. TUGS (Continued)	
Requesting authority	
Availability timing / Communication	
Hiring charges	
8. BERTHING AND WHARVES	
Type & Number of berths available	
Length	
Depth alongside	
Facilities available	
Procedure for requesting berth & hiring charges	
9. CARGO HANDLING	
Containers	
Lighters & Ro-Ro etc.	
10. CRANES	
Brief details of Max. lifting capacity, Height of boom at wharf level and Outreach	
Container handling facilities	
11. BRIDGES	
Vertical clearance	
12. REPAIRS	
Hull machinery and underwater	
Ship and Boat yards	
Docking or Slipway facilities (Size/ Dimensions of vessels handled)	
Hards and Ramps	
Divers / Diving assistance	
13. SERVICES	
Radio / FAX / Telephone / Internet etc.	
Medical	
Quarantine	
Consul	
Ship chandlery and Stevedores	
Compass adjustment	
Tank cleaning	
Hull painting	
Police / Ambulance / Firefighting (Fixed and Mobile facilities)	
Nav. Warning and Weather bulletin	
Garbage disposal / Waste oil disposal	
Helicopter landing facilities	

14. RESCUE & DISTRESS	
Salvage, Lifeboat, Life guards, etc	
15. SUPPLIES	
Fuel (Type, Quantities & Method of delivery)	
Fresh water (Method of delivery and Rate of supply)	
Provisions	
Chart agents	
16. COMMUNICATIONS	
Road, Rail and Air services available	
Nearest airport or airfield	
Port Radio and Information Service (Frequencies and Operating Hours)	
17. PORT AUTHORITY	
Designation, Address, Telephone, E-mail Address and Website	
18. SECURITY	
Security of ports / International Ship and Port Facility Security (ISPS) compliance	
Custom and Immigration Regulations in force	
19. SMALL CRAFT FACILITIES	
Information and facilities for small craft, yachts visiting the port	
Yacht clubs, berths etc	
20. SHORT LEAVE	
21. CLUBS RECREATION	
Information Kiosk (Location)	
Foreign Exchange firms / Banks (Within / Near Port Area)	
Places of interest near port	
22. VIEWS	
Photographs(Duly annotated) of the approaches, leading marks, the entrance to the harbour etc.	
23. ADDITIONAL DETAILS	
Any other information considered to be useful for the mariners	
SIGNATURE OF THE OBSERVER / REPORTER / MASTER	

To accompany the Indian Notice to Mariners No.174/16

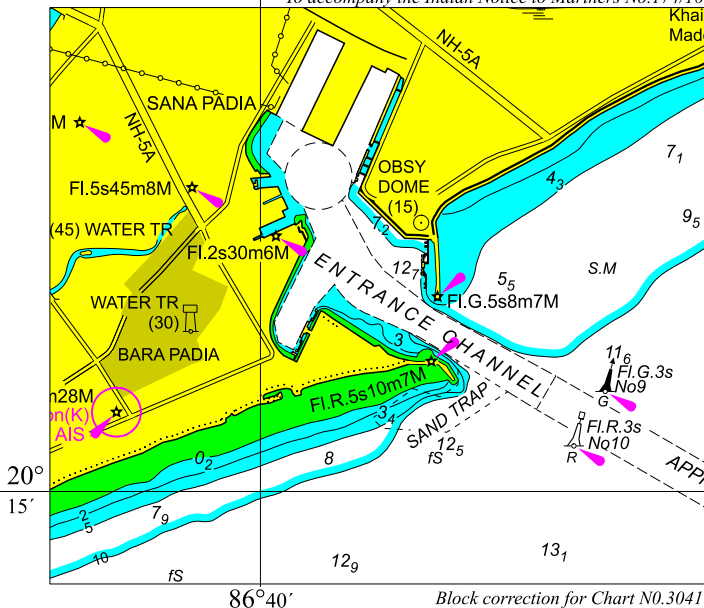


To accompany the Indian Notice to Mariners No.174/16



Block correction for Chart N0.
3010 (PĀRĀDIP ANCHORAGE)

To accompany the Indian Notice to Mariners No.174/16



Block correction for Chart N0.3041
(APPROACHES TO PĀRĀDĪP)



FOR 24 X 7 SAR ASSISTANCE IN INDIAN SRR

Email: indsar@vsnl.net

NATION WIDE SAR TELE: 1554 (LAND LINE)

INMARSAT C (IOR) 441907210 CODE: 43 (TOLL FREE)

AFTN: VABBYXYC